

PHOENIX SPORT AND LEARNING CENTRE

DAWLEY, TELFORD

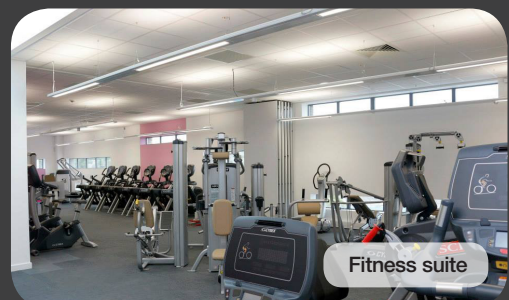
Status: Completed 2013
Client: Telford and Wrekin Council
Value: £9.0 million



The Phoenix Sport and Learning Centre has been developed as an integral part of the new Phoenix Academy that was procured through Telford and Wrekin Council's £200m *Building Schools for the Future* (BSF) programme. The project enables its 900 students and the wider community to benefit from state-of-the-art educational and sports facilities.

The indoor sports and leisure facilities include a 50-station health and fitness suite, a dance studio, an eight badminton court sized multi-sport hall and a secondary hall. Both halls incorporate retractable spectator seating. The fitness suite provides the latest strength and cardio training equipment with linked pc and video interactive consoles. It also includes treadmills, bikes, resistance and free weight equipment plus TRX suspension and arc trainer.

The outdoor provision includes a full-size 3G artificial grass rugby league and football pitch (providing a base for Telford Raiders RLC), a national BMX track, six macadam MUGAs and two natural turf pitches.



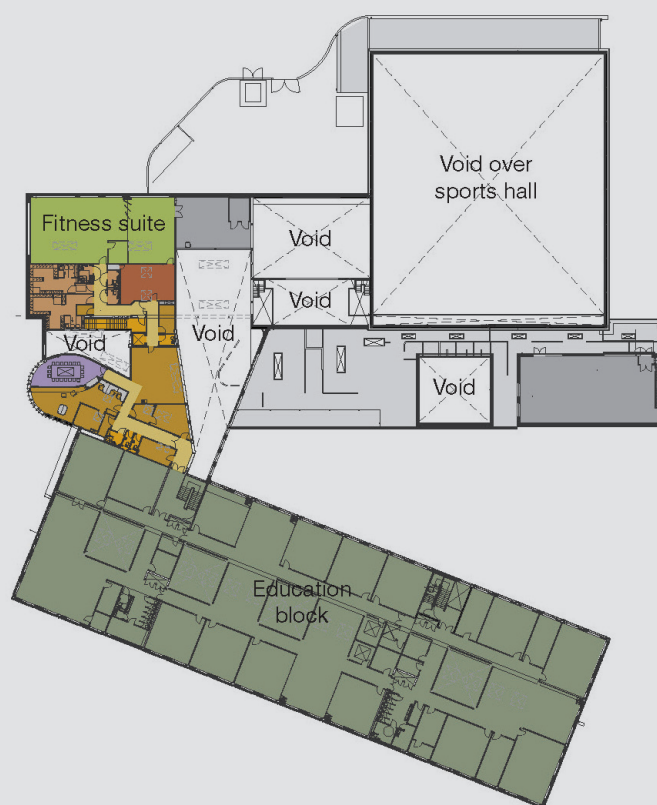
The Phoenix project gives community benefits for sport and education through collaboration in investment, administration and development



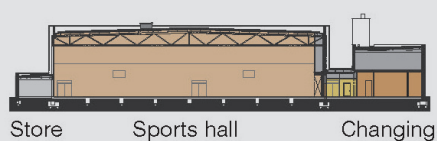
Ground floor plan



First floor plan



Long Section
(through sports hall and changing)



Key

Entrance	Education Academy block
Circulation	Sports hall
Foyer / public toilet	Fitness suite
Staff areas / reception	Dance studio
Secondary (Multi-use) hall	Changing (internal sports)
Meeting room	Changing (external sports)
Stores	Plant / service void
Library / Casual meeting	First aid
Music / Drama	Sports and health science
	Lightwell

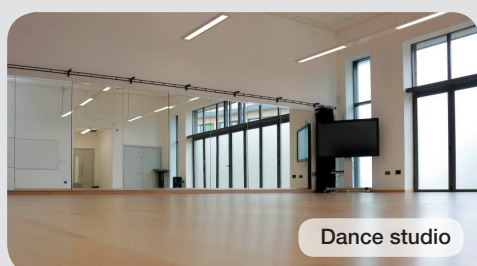
Design

The layout of the building and external sports areas make effective use of the existing topography to provide a natural delineation between the sports/administration facilities and the education areas, while providing full accessibility throughout.

The design effectively co-locates changing facilities, wet areas and overhead plant rooms along one side of the sports hall, with indoor and outdoor sports equipment storage along the other.

The accessible changing facilities discretely accommodate group, disabled and officials requirements and provide convenient access/egress to and from the external sports areas.

Further sports related medical, therapy, consulting and clinical facilities are located near the entrance lobby along with a kitchen/servery zone adjacent.



Dance studio

Construction

The use of long-span structural steel members and lightweight insulated cladding panels allowed the large sports hall volume to be constructed cost effectively.

To meet education standards for acoustics, the sports hall was designed to achieve a reverberation time of 1.5 seconds.

Accessible Design

Key features include:

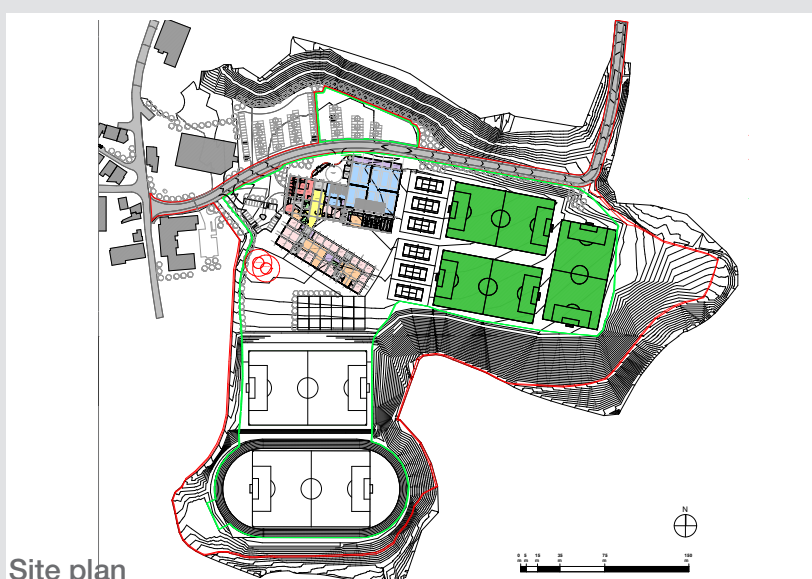
- Vertical access lift
- Automatic opening entrance doors
- Accessible toilets
- Accessible changing facilities
- Appropriate circulation provision for wheelchair and sports chair users
- Adjacent disabled parking.

Schedule of Areas (Sports/Administration block only)

Gross Site Area	10.5 hectares
Building Footprint Area	3,413 m ² (GEA)
Gross Floor Area	3,820 m ² - internal (GIFA)
Circulation Area (% GIFA including foyer and reception but excluding cafe)	20 %

General Accommodation / Standards

Sports Hall	40.0 x 35.5 m sports hall with 8.0 m clear height, natural lighting, glare control and retractable seating with 500 capacity. The specialist sports flooring includes line markings for badminton, netball, basketball, volleyball. Table tennis provision and associated equipment storage is also provided
Secondary Hall	18.0 x 12.5 m space incorporating artificial lighting and retractable seating with 185 capacity
Fitness Suite	21.0 x 10.0 m space accommodating 50 stations including personal TV screens, treadmills, bikes, resistance and free weight equipment, TRX suspension and arc trainer
Dance Studio	11.0 x 10.0 m space with timber sprung flooring, mirrored wall and handrail
Sports Classroom, Clinic and Therapy Room	All fully-equipped facilities measuring 8.0 x 5.4 m (Sports Classroom), 4.5 x 2.4 m (Clinic) and 9.2 x 4.8 m (Therapy Room)
Changing Spaces (for indoor and outdoor sports)	Two sets of flexible twin group changing rooms for the internal sports provision (with linking doors between) and one set of twin group changing rooms for the external sports provision with direct access to pitches. In addition, there are separate accessible, officials and staff changing rooms. Generally full-height ceramic wall tiles to shower areas with painted blockwork elsewhere, non-slip floor finish and suspended ceilings
Outdoor Sports Provision	One full-size 3G artificial grass rugby league/football pitch (including two mini-soccer cross pitches), one national standard BMX track, two natural turf pitches and six macadam MUGAs



Site plan

General Description of Key Specifications and Materials

Frame	Fire protected steel portal frame
Cladding	Predominantly proprietary composite impact-resistant insulated wall panelling integrated with sections of facing brick and glazed curtain walling features
Roofing	Proprietary composite standing seam insulated roofing system with a perforated acoustic liner sheet to the underside. Single ply insulated covering to changing and administration areas
Internal walls	Concrete blockwork to sports hall and changing/wc areas with stud partition system in administration areas
Internal doors	Factory finish solid core laminate-faced doorsets
Wall finishes	Generally painted blockwork. Ceramic tiling in shower areas
Floors	Specialist sprung sports surface in the sports hall and dance studio. Vinyl non-slip covering to wet areas with carpeting in administration/office areas
Lighting	Sports hall lighting provision up to 500 lux

Summary of Elemental Costs (Sports/administration block only)

	Element	Total Cost (£)	Cost (£) per m ²
1	Substructure	600,000	157
2	Superstructure	1,600,000	419
3	Finishes	600,000	157
4	Fittings and furnishings	1,300,000	340
5	Services	1,300,000	340
6	External works	2,000,000	524
7	Preliminaries	900,000	236
8	Contingencies	-	-
9	Professional fees and surveys	700,000	183
	TOTAL CONTRACT SUM	9,000,000	2,356

Notes:

- Costs stated are approximate rounded costs and based on first quarter 2012
- Costs stated exclude VAT
- Cost (£) per m² based on 3,820 m² GIFA
- Costs do not include any land acquisition costs
- The sports/administration and education blocks were procured via a single integrated construction project costing approximately £16m as part of a wider £200m BSF Regional Programme. Therefore accurate costs for the sports element alone are not available. The costs identified above have been assessed from the information available and are indicative notional figures only.

Specific Items of Interest

Element	Approximate area (m ²)
Foyer / Reception / Vending	522
Sports Hall	1418
Secondary Hall	220
Changing Space	382
Fitness Suite	221
Dance Studio	86
Other Areas	971

[Click here for 'User Guide'](#)

[Click here for current 'Design and Cost Guidance'](#)

Environmental Sustainability

The building features measures designed to reduce its carbon footprint and minimise running costs. Measures include:

- Insulation to external envelope in excess of Building Regulation requirements to limit heat loss
- Emphasis on natural ventilation to minimise use of mechanical ventilation
- Building management system (BMS) to control and minimise energy use
- Low energy lighting with presence detection
- Solar shading

Procurement / Programme

Designer	Seymour Harris Architecture
Contractor	Kier Moss
Tender	Contractor selected for the wider BSF programme via a competitive process sourced through the <i>Partnerships for Schools National Framework Contract</i> (NFC)
Contract	NFC
Duration	72 weeks from contractor mobilisation to practical completion



Photographs provided by QMP 2013