

Developing the Right Sports Hall

Sports Data Sheets Handball

Introduction

The following sports data sheets are for use in conjunction with Sport England's 'Developing the Right Sports Hall' (DRSH) main document. They relate to Step 5 'Establishing the Project Brief' and identify the needs of the priority sport and the key secondary sports.

These sheets show the requirements for Handball as the 'Priority Sport' at various levels of play and other 'Secondary Sports' that can fit into the same overall space.

	Level of Play			
New Level of Play Category ¹	International	Premier	Club	Community
	This category relates to the lowest level of International play ²	This category relates a Premier / National League Club competing in regional or Inter county competitions	This category relates to a local club competing in District and County League competitions	This category relates to school and community use where there is no formal competitive structure / no specific need for space for officials or spectator accommodation
Handball equivalent ³	International competition / Eight National League	Regional and Premier England Handball League / Super Seven National League	Local club and inter county competition / Regional Development League	School and recreational use

Commentary

The sports data sheets use the NGB's requirements for the field of play. Spectators zones for match play are not included and are assumed to be a site specific requirement. For further details of the requirements for handball, see the England Handball Association (EHA) website: www.englishhandball.com, the British Handball website: <http://www.britishhandball.com> and The European Handball Federation (EHF) website: <http://www.eurohandball.com/>. For further details of the requirements for 'Secondary Sports', see Appendix 8 of Sport England's main DRSH document available at <http://www.sportengland.org/facilities-planning/tools-guidance/design-and-cost-guidance/sports-halls> for links to other NGB's websites.

¹ New level of play categories for each sport as agreed by the NGBs and Sport England and applicable throughout this document.

² For higher levels of international competition, such as major championships, the relevant NGB should be consulted at a very early stage as the requirements vary considerably.

³ For other sports, see Appendix 4 'Level of play categories for each sport' within main document.



Key Issues

- **Spatial requirements:** Handball practice can be played on all courts that are 40.0 x 20.0 m. Smaller courts of 34.0-37.0 x 20.0 m may be specified in national or local regulations, however, full-size run offs should be retained. Overall primary playing area dimensions are measured from the outside of the line markings. Generally, a clear unobstructed height of 7.0 m minimum is required for the field of play and the first 0.5 m of run off area.
- **Court markings:** Generally 50 mm wide (except lines between the goal posts which are 80 mm wide) in any clearly distinguishable colour and which contrasts with those of other sports line markings in the same space. However, markings may be the same colour as for volleyball on the condition that the two playing fields have the same centre and court alignment.
- **Flooring:** See EHA/EHF requirements for flooring to dedicated facilities. The strongly preferred option for permanent handball facilities is a sprung floor - see notes on surface options. For lower levels of play, a temporary flooring can be used provided that the flooring underneath is smooth, flat, level and dry. End and side run offs shall have the same surface as the playing area. Floor sockets (for secondary sports) to be flush with the floor surface and subject to risk assessment.
- **Lighting:** Uniformity ratio = E_{min}/E_{ave} . Lux level requirements vary depending on level of play. See EHF/EHA recommendations.
- **Spectator Provision:** There should be early consultation with EHA/EHF on the spectator requirements for each project as these will vary from club to club and site to site.

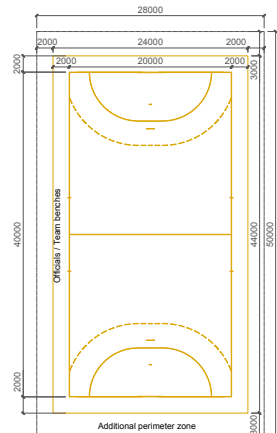
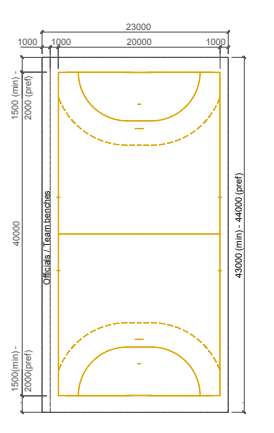
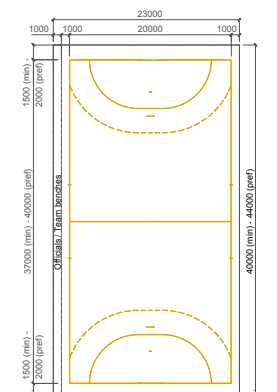
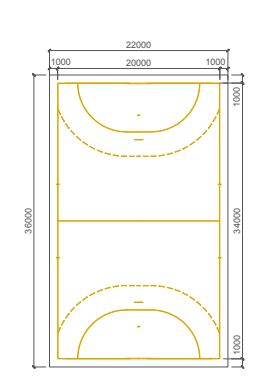
Note: For further details, refer to The European Handball Federation (EHF) publications including the 'EHF Rules of the Game' document available at <http://www.eurohandball.com/> and Sport England's design guidance notes 'Sports Halls: Design and Layouts', 'Floors for Indoor Sports' and 'Artificial Sports Lighting' available at <http://www.sportengland.org/facilities-planning/tools-guidance/design-and-cost-guidance/>.

Primary Sport

Handball - Overview

Source of information:

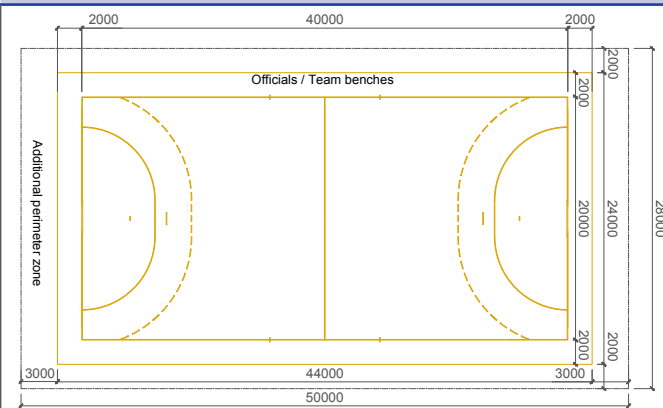
<http://www.Englandhandball.com/eha-rules-and-regulations/> and <http://www.eurohandball.com/ehf/technicalmanuals>

International	Premier	Overall space (m) incl. R/O + T/O											
		Principal playing area (m)			Run offs (m)			Additional areas (m)		Specification			
		L x W x H	Length *	Width *	Height	Ends	Sides	Between courts / Between courts with a dividing net	T/O	SS	Flooring	Lighting (Table A.1 BS EN 12193:2007)	
		International	50.00 28.00 10.00 - 12.00**	40.00	20.00	10.00 - 12.00**	2.00	2.00	N/A	2.00 (sides) 3.00 (ends)	Required	Sprung floor meeting EHF standards	1000-1500 lux 0.7 Emin/Eave
		Premier	43.00 - 44.00 23.00 7.00	40.00	20.00	7.00	1.50 (min) - 2.00 (pref)	1.00	N/A	1.00	Preferred	Sprung floor meeting EHF / EHA standards	500 lux 0.7 Emin/Eave
		Club	40.00 - 44.00 23.00 7.00	37.00 (min) - 40.00 (pref)	20.00	7.00	1.50 (min) - 2.00 (pref)	1.00	N/A	1.00	Optional	Sprung floor meeting EHA standards	300 lux 0.7 Emin/Eave
Community			36.00 22.00 7.00	34.00	20.00	7.00	1.00	1.00	N/A	Optional	N/A	Sprung floor meeting EHA standards	300 lux 0.7 Emin/Eave

* Use of a full-size 40 x 20 m court is strongly recommended but a smaller size court may be acceptable for national or local league matches, subject to a risk assessment including suitable run offs / safety measures taken. Where a full size court is unachievable for a particular venue, EHA accept a minimum court size of 34.0 x 20.0 m with 36.0 x 22.0 m overall space including run offs for full-sized team play at community level of play.

** Subject to spectator seating requirements

Primary Sport

Handball				Source of information: http://www.EnglandHandball.com/eha-rules-and-regulations/ and http://www.eurohandball.com/ehf/technicalmanuals										
International				Overall space (m) incl. R/O + T/O 50.00 x 28.00 x 10.00-12.00**										
				Principal playing area (m)			Run offs (m)			Additional areas (m)		Specification		
							R/O			T/O SS				
				L x W x H	Length	Width	Height	Ends	Sides	Between courts / Between courts with a dividing net	Space for teams (T) and match officials (O)	Spectator seating	Flooring	Lighting
				50.00 28.00 10.00 - 12.00**	40.00	20.00	10.00 - 12.00 **	2.00	2.00	N/A	2.00 (sides) 3.00 (ends)	Required	Sprung floor meeting EHF standards	1000-1500 lux 0.7 Emin/Eave
Secondary Sports (* = height permitting / ** = subject to spectator seating requirements)														
Sport	Number	Compliance	Level											
Badminton	5 court format (or 6 premier level)	✓	International	42.50 17.40 9.00	13.40	6.10	9.00	2.00	2.00	2.00 / 3.00	Essential	Essential	Combined elastics	Same (1000 lux)
Basketball	1 court format	✓	International	32.10 21.10 7.00	28.00	15.00	7.00	2.05	2.05	4.10 / 4.10	2.00	Required	Area elastic wooden meet/g FIBA standards	Lower (750 lux)
Indoor Cricket	5 lanes	✓	Club / Community	37.28 20.04 7.70	31.62	3.66	7.70	1.00	1.00	3.40 for basket - ball goal	-	-	Mats req/d (to ECB standards)	Lower (750 lux)
Netball	1 court format	✓	International	36.60 23.35 7.50	30.50	15.25	7.50	3.05	3.05	4.00 / 6.10	2.00 + TV perimeter zone	500 - 1000 seats	Any meeting IFNA standards	Same (1500 lux)
Volleyball	1 court format (lengthways)	✓	International*	34.00 22.00 12.50	18.00	9.00	12.50	8.00	5.00	10.00 / 10.00	3.00	-	Area elastics	Same (1000-1500 lux)
Volleyball Training	3 court format (transverse)	✓	Community size run offs	45.00 24.00 7.50	18.00	9.00	7.50	3.00 (1.00 min)	3.00	6.00 / 6.00	-	-	Area elastic	Lower (500 lux)
Indoor Hockey	1 court format	✓	International	50.00 25.40 -	44.00	22.00	-	3.00	1.10	N/A	1.20	Optional	Sprung floor meet/g FIH standards	Lower (750 lux)

Primary Sport / Secondary Sport Issues

Handball - International (cont/d)

Notes of key issues for international handball

- See 'Key Issues' on page 1 cover sheet.
- Hatched areas indicate space which is excess to secondary sport requirements. In some cases, this can provide improved circulation and space for spectators and wheelchair users.
- For Euro-standard events, EHF event hall requirements are for approx 120 x 150 m or about 18,000 – 20,000 m². The 50 x 28 m match play area is to ensure that the playing court can be covered effectively by TV cameras.
- International levels of play for handball have been based on the EHF's requirements. Generally, hall capacity shall depend on the purpose or use of the playing hall. In any case, the playing hall must have enough grandstands on all four sides for spectators. The headroom for handball halls is 10 m minimum. In event halls featuring Jumbotron systems, up to 12 m headroom is required depending on the seating capacity for spectators in the hall.
- See EHF requirements for flooring to dedicated facilities. Irrespective of the hall utilisation plan, the substructure (e.g. screed, concrete) shall be level. The floor system used (permanent hall floors or mobile sport floors) shall be adapted to the substructure in terms of its protective, sporting and technical properties and meet EN and/or DIN standards.
- For dedicated facilities, lines between two adjacent areas may be replaced with a difference in colors between the adjacent areas of the floor. All lines on a permanent arena floor shall be exclusively handball lines conforming to the IHF Rules of the Game or, as the preferred alternative, the

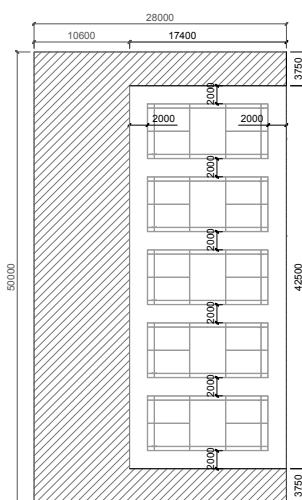
CI floor system without lines. If mobile handball flooring is installed, such flooring may likewise show only handball lines or an EHF-approved complementary segment scheme (EHF Euro Event floor scheme). For multi-court facilities, all markings must be made in a colour which contrasts with the playing surface. Markings are generally 50 mm wide (except lines between the goal posts which are 80 mm wide) in any clearly distinguishable colour and which contrasts with those of other sports line markings in the same space. However, markings may be the same colour as for volleyball on the condition that the two playing fields have the same centre and court alignment.

- EHF have further requirements for International events - visit <http://www.eurohandball.com/> and <http://www.eurohandball.com/ehf/technicalmanuals>

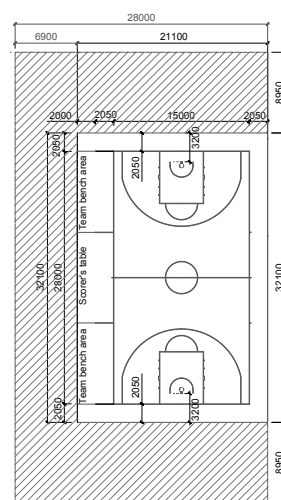
Secondary Sports

Layouts for other sports within an international handball space of 50.00 x 28.00 x 10.00-12.00 m

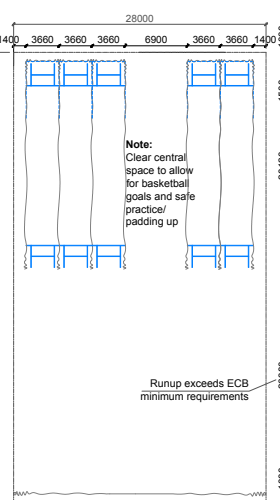
Badminton (International)



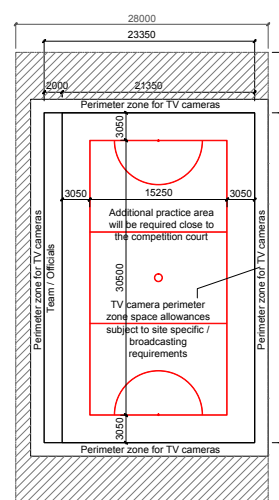
Basketball (International)



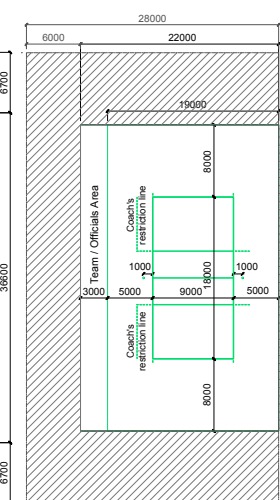
Indoor Cricket



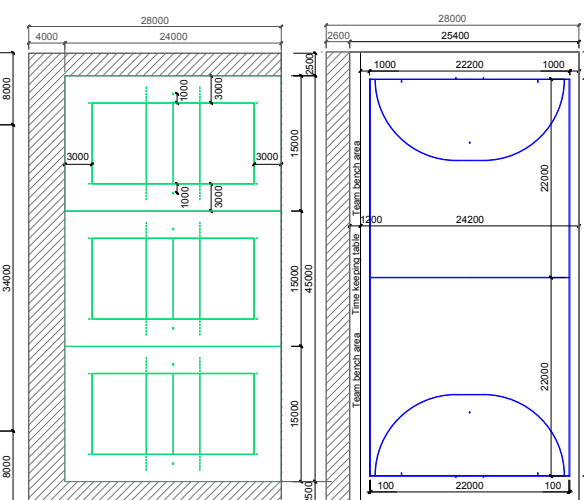
Netball (International)



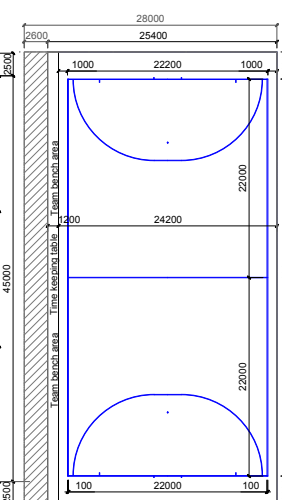
Volleyball (International)



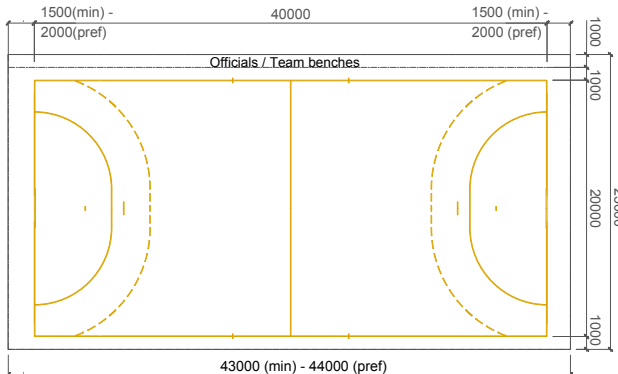
Volleyball Training (transverse) (International)



Indoor hockey (International)



Primary Sport

Handball				Source of information: http://www.Englandhandball.com/eha-rules-and-regulations/ and http://www.eurohandball.com/ehf/technicalmanuals										
Premier				Overall space (m) incl. R/O + T/O 43.00-44.00 x 23.00 x 7.00										
				Principal playing area (m)			Run offs (m)			Additional areas (m)		Specification		
L x W x H				Length	Width	Height	Ends	Sides	Between courts / Between courts with a dividing net	Space for teams (T) and match officials (O)	Spectator seating	Flooring	Lighting	
43.00-44.00 23.00 7.00				40.00	20.00	7.00	1.50 (min) - 2.00 (pref)	1.00	N/A	1.00	Preferred	Sprung floor meeting EHF / EHA standards	500 lux 0.7 Emin/Eave	
Secondary Sports (* = height permitting)														
Sport	Number	Compliance	Level											
Badminton*	5 court format	✓	Premier / Club	39.50 17.40 7.50	13.40	6.10	7.50	2.00	1.50	1.50 / 2.60	Optional	Optional	Combined, area or mixed elastics	Same (500 lux)
Basketball	1 court format	✓	Premier	32.10 20.10 7.00	28.00	15.00	7.00	2.05	2.05	4.10 / 4.10	1.00	Required	Area elastic wooden meet/g FIBA standards	Same (500 lux)
Indoor Cricket*	4 lanes	✓	Club / Community	33.62 20.04 7.70	31.62	3.66	7.70	1.00	1.00	3.40 for basket - ball goal	-	-	Mats req/d (to ECB standards)	Higher (750 lux)
Netball*	1 court format	✓	Club	36.60 21.35 7.50	30.50	15.25	7.50	3.05	3.05	4.00 / 6.10	-	Optional	Any meeting AENA standards	Higher (750 lux)
Volleyball*	1 court format (lengthways)	✓	Premier	28.00 17.00 7.50	18.00	9.00	7.50	5.00	3.00	6.00 / 6.00	2.00	-	Area elastic	Same (500 lux)
Volleyball Training*	3 court format (transverse)	✓	Training	30.00 20.00 7.50	18.00	9.00	7.50	1.00	3.00	6.00 / 6.00	-	-	Area elastic	Same (500 lux)
Basketball Training	Rings on side walls	✓	Training	-										

Primary Sport / Secondary Sport Issues

Handball - Premier (cont/d)

Notes of key issues for premier level handball

- See 'Key Issues' on page 1 cover sheet.
- Hatched areas indicate space which is excess to secondary sport requirements. In some cases, this can provide improved circulation and space for spectators and wheelchair users.
- Should the 40 x 20 m court specification be unachievable for a particular venue, a club should seek approval from the Competitions Committee (CC). Clubs must seek dispensation from the CC for courts with a minimum size of 34 x 20 m. The playing court should, where possible, achieve 1 m minimum clear between side lines and walls. Any equipment forming part of the facility should be lifted clear of the floor and where this is not possible, a risk assessment undertaken. Behind each goal line, a clear space of 1.5 m (min) / 2.0 m (preferred) is required. Where this is not possible, appropriate action should be taken to

prevent accidents. It is recommended that crash mats be placed against the wall on either side of the goal as close to the goalposts as possible. However, the distance between the goal line and the first possible obstruction should never be less than 0.5 m.

- Premier level of play have been based on EHA requirements for 7 m minimum clear height above the court
- For flooring guidelines, see International Handball Federation (IHF) document 'Recommendations and Guidelines for the Construction of Handball Playing Halls No. 6-E' available from the British Handball website and other EHA guidance for further information. For multi-court facilities, all markings must be made in a colour which contrasts with the playing surface. Markings are generally 50 mm wide (except lines between the goal posts which are 80 mm wide) in any clearly distinguishable

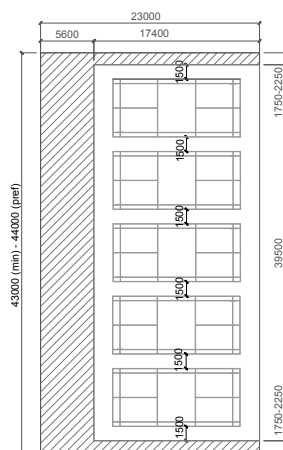
colour and which contrasts with those of other sports line markings in the same space. However, markings may be the same colour as for volleyball on the condition that the two playing fields have the same centre and court alignment.

- It is preferred for Super Seven National League / recommended for Eight National League that spectator provision is incorporated. If there are spectators at floor level, a clear space of 2 m minimum but preferably 3 m is recommended between the substitutes' area and the nearest row of spectators, and ideally, no spectators present behind the substitutes' bench and/or officials' table.
- Each club should have two team benches, an officials' table with at least two chairs, a scoreboard (electronic or manual) and a visible clock (electronic or manual) available in their hall for home matches.

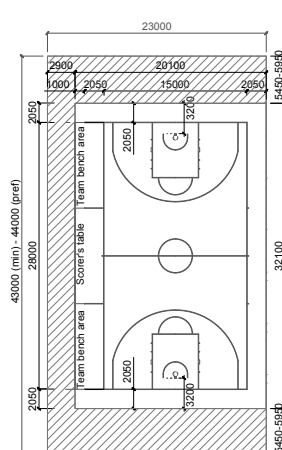
Secondary Sports

Layouts for other sports within a premier level handball space of 43.00-44.00 x 23.00 x 7.00 m

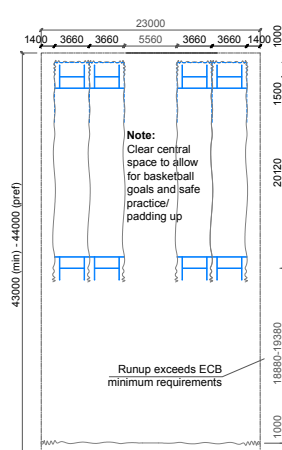
Badminton (Premier/Club)



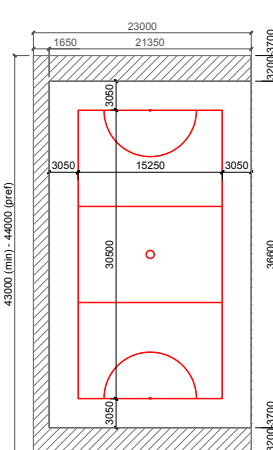
Basketball (Premier)



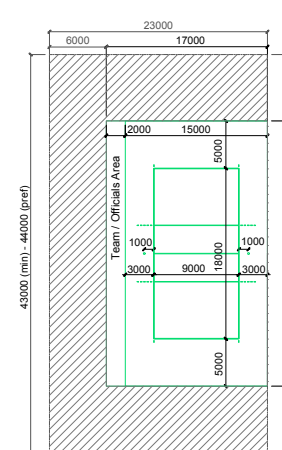
Indoor Cricket



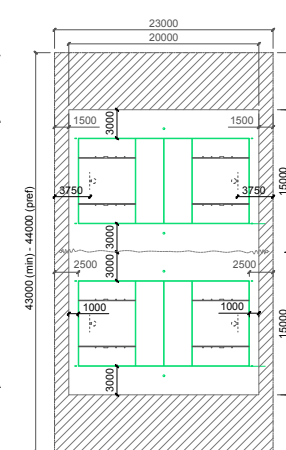
Netball (Club)



Volleyball (Premier)



Volleyball Training (transverse)



Basketball Training

- can be accommodated in a premier level handball space
- number and location to project specific requirements

Primary Sport

Handball				Source of information: http://www.Englandhandball.com/eha-rules-and-regulations/ and http://www.eurohandball.com/ehf/technicalmanuals										
Club				Overall space (m) incl. R/O + T/O 40.00-44.00 x 23.00 x 7.00										
				Principal playing area (m)			Run offs (m)			Additional areas (m)		Specification		
							R/O			T/O	SS			
				L x W x H	Length	Width	Height	Ends	Sides	Between courts / Between courts with a dividing net	Space for teams (T) and match officials (O)	Spectator seating	Flooring	Lighting
				40.00-44.00 23.00 7.00	37.00 (min) - 40.00 (pref)	20.00	7.00	1.50 (min) - 2.00 (pref)	1.00	N/A	1.00	Optional	Sprung floor meeting EHF / EHA standards	300 lux 0.7 Emin/Eave
Secondary Sports (* = height permitting)														
Sport	Number	Compliance	Level											
Badminton*	5 court format	✓	Premier / Club	39.50 17.40 7.50	13.40	6.10	7.50	2.00	1.50	1.50 / 2.60	Optional	Optional	Combined, area or mixed elastics	Higher (500 lux)
Basketball	1 court format	✓	Premier	32.10 20.10 7.00	28.00	15.00	7.00	2.05	2.05	4.10 / 4.10	1.00	Required	Area elastic wooden meet/g FIBA standards	Higher (500 lux)
Indoor Cricket*	4 lanes	✓	Club / Community	33.62 20.04 7.70	31.62	3.66	7.70	1.00	1.00	3.40 for basket - ball goal	-	-	Mats req/d (to ECB standards)	Higher (750 lux)
Netball*	1 court format	✓	Club	36.60 21.35 7.50	30.50	15.25	7.50	3.05	3.05	4.00 / 6.10	-	Optional	Any meeting AENA standards	Higher (750 lux)
Volleyball*	1 court format (lengthways)	✓	Premier	28.00 17.00 7.50	18.00	9.00	7.50	5.00	3.00	6.00 / 6.00	2.00	-	Area elastic	Higher (500 lux)
Volleyball Training*	3 court format (transverse)	✓	Training	30.00 20.00 7.50	18.00	9.00	7.50	1.00	3.00	6.00 / 6.00	-	-	Area elastic	Higher (500 lux)
Basketball Training	Rings on side walls	✓	Training	-										

Primary Sport / Secondary Sport Issues

Handball - Club (cont/d)

Notes of key issues for club level handball

- See 'Key Issues' on page 1 cover sheet.
- Hatched areas indicate space which is excess to secondary sport requirements. In some cases, this can provide improved circulation and space for spectators and wheelchair users.
- A 40 x 20 m court specification is preferred, with 37 x 20 m being the minimum. Where the minimum size is unachievable for a particular venue, a club should seek approval from the Competitions Committee (CC). Clubs must seek dispensation from the CC for courts achieving the smallest (community) size of 34 x 20 m. The playing court should, where possible, achieve 1 m minimum clear between side lines and walls. Any equipment forming part of the facility should be lifted clear of the floor and where this is not possible, a risk assessment undertaken. Behind each goal line, a clear space of 1.5 m (min) / 2.0 m (preferred) is

required. Where this is not possible, appropriate action should be taken to prevent accidents. It is recommended that crash mats be placed against the wall on either side of the goal as close to the goalposts as possible. However, the distance between the goal line and the first possible obstruction should never be less than 0.5 m.

- Club level of play have been based on EHA requirements for 7 m minimum clear height above the court.
- For flooring guidelines, see International Handball Federation (IHF) document '*Recommendations and Guidelines for the Construction of Handball Playing Halls No. 6-E*' available from the *British Handball website* and other EHA guidance for further information. For multi-court facilities, all markings must be made in a colour which contrasts with the playing surface. Markings are generally 50 mm wide (except lines between the goal posts which are

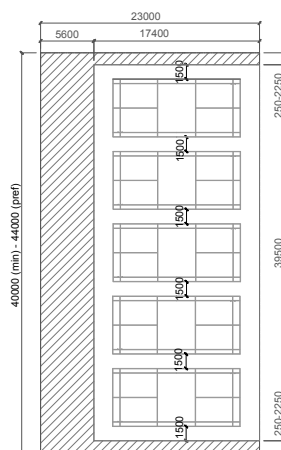
80 mm wide) in any clearly distinguishable colour and which contrasts with those of other sports line markings in the same space. However, markings may be the same colour as for volleyball on the condition that the two playing fields have the same centre and court alignment.

- It is preferred for Super Seven National League / recommended for Eight National League that spectator provision is incorporated. If there are spectators at floor level, a clear space of 2 m minimum but preferably 3 m is recommended between the substitutes' area and the nearest row of spectators, and ideally, no spectators present behind the substitutes' bench and/or officials' table.
- Each club should have two team benches, an officials' table with at least two chairs, a scoreboard (electronic or manual) and a visible clock (electronic or manual) available in their hall for home matches.

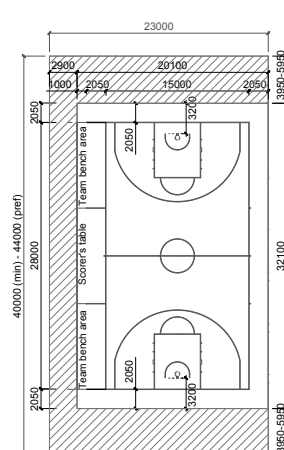
Secondary Sports

Layouts for other sports within a club level handball space of 40.00-44.00 x 23.00 x 7.00 m

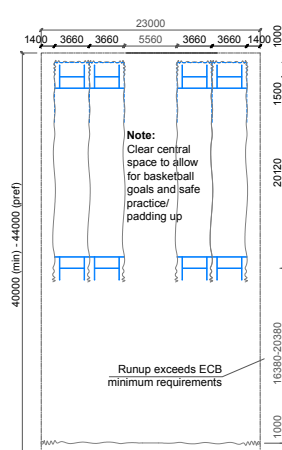
Badminton (Premier/Club)



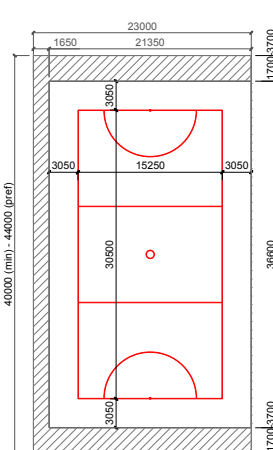
Basketball (Premier)



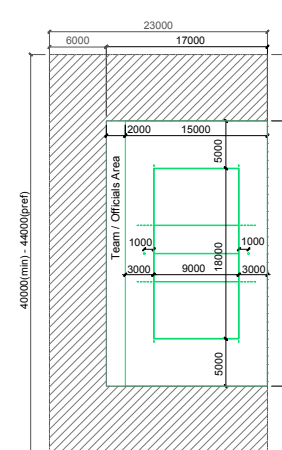
Indoor Cricket



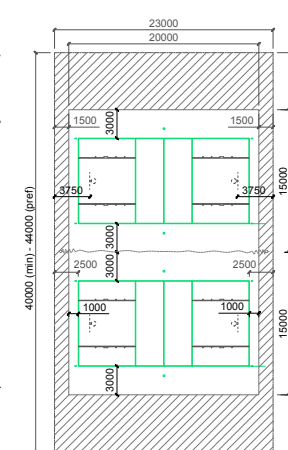
Netball (Club)



Volleyball (Premier)



Volleyball Training (transverse)

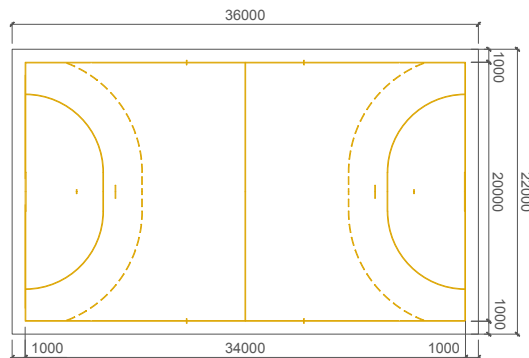


Basketball Training

- can be accommodated in a club level handball space
- number and location to project specific requirements

Handball

Primary Sport

Handball				Source of information: http://www.Englandhandball.com/eha-rules-and-regulations/ and http://www.eurohandball.com/ehf/technicalmanuals										
Community				Overall space (m) incl. R/O + T/O 36.00 x 22.00 x 7.00										
				Principal playing area (m)			Run offs (m)			Additional areas (m)		Specification		
							R/O			T/O SS				
				L x W x H	Length	Width	Height	Ends	Sides	Between courts / Between courts with a dividing net	Space for teams (T) and match officials (O)	Spectator seating	Flooring	Lighting
				36.00 22.00 7.00	34.00	20.00	7.00	1.00	1.00	N/A	Optional	N/A	Sprung floor meeting EHA standards	300 lux 0.7 Emin/Eave
Secondary Sports (* = height permitting)														
Sport	Number	Compliance	Level											
Badminton *	4 court format	✓	Premier / Club	33.00 17.40 7.50	13.40	6.10	7.50	2.00	1.50	1.50 / 2.60	Optional	Optional	Combined, area or mixed elastics	Higher (500 lux)
Basketball	1 court format	✓	Premier	32.10 20.10 7.00	28.00	15.00	7.00	2.05	2.05	4.10 / 4.10	1.00	Required	Semi-sprung wooden or synthetic	Higher (500 lux)
Indoor Cricket*	3 lanes	✓	Club / Community	29.96 20.04 7.70	31.62	3.66	7.70	1.00	1.00	3.40 for basket - ball goal	-	-	Mats req/d (to ECB standards)	Higher (750 lux)
Netball*	1 court format	✓	Club	36.60 21.35 7.50	30.50	15.25	7.50	3.05	3.05	4.00 / 6.10	Optional	Optional	Any meeting AENA standards	Higher (750 lux)
Volleyball*	1 court format (lengthways)	✓	Premier	28.00 17.00 7.50	18.00	9.00	7.50	5.00	3.00	6.00 / 6.00	2.00	-	Area elastic	Higher (500 lux)
Volleyball Training*	2 court format (transverse)	✓	Training	30.00 20.00 7.50	18.00	9.00	7.50	1.00	3.00	6.00 / 6.00	-	-	Area elastic	Higher (500 lux)
Basketball Training	Rings on side walls	✓	Training	-										

Primary Sport / Secondary Sport Issues

Handball - Community (cont/d)

Notes of key issues for community level handball

- See 'Key Issues' on page 1 cover sheet.
- Hatched areas indicate space which is excess to secondary sport requirements. In some cases, this can provide improved circulation and space for spectators and wheelchair users.
- Should the preferred 40 x 20 m court size be unachievable for a particular venue, EHA accept a minimum court size of 34 x 20 m with 36 x 22 m overall space including run offs (as indicated) for full-sized team play at community level of play. For informal activity in spaces smaller than this, the sport can be adapted to suit the location e.g. by reducing the number of players involved and using age specific equipment. The playing court should, where possible, achieve 1 m minimum clear between side lines

and walls. Any equipment forming part of the facility should be lifted clear of the floor and where this is not possible, a risk assessment undertaken. Behind each goal line, a clear space of 1 m is required. Where this is not possible, appropriate action should be taken to prevent accidents. It is recommended that crash mats be placed against the wall on either side of the goal as close to the goalposts as possible. However, the distance between the goal line and the first possible obstruction should never be less than 0.5 m.

- Community level of play has been based on EHA requirements for 7 m minimum clear height above the court
- For flooring guidelines, see International Handball Federation (IHF) document 'Recommendations and Guidelines for the

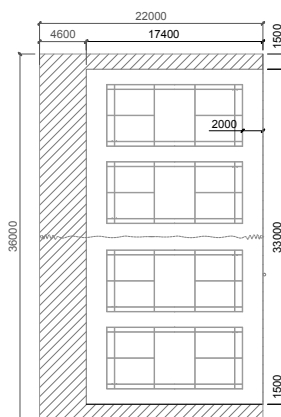
Construction of Handball Playing Halls No. 6-E' available from the British Handball website and other EHA guidance for further information. For multi-court facilities, all markings must be made in a colour which contrasts with the playing surface. Markings are generally 50 mm wide (except lines between the goal posts which are 80 mm wide) in any clearly distinguishable colour and which contrasts with those of other sports line markings in the same space. However, markings may be the same colour as for volleyball on the condition that the two playing fields have the same centre and court alignment.

- At community level of play, spectator provision is optional. If included, refer to notes for Premier/Club level of play above.

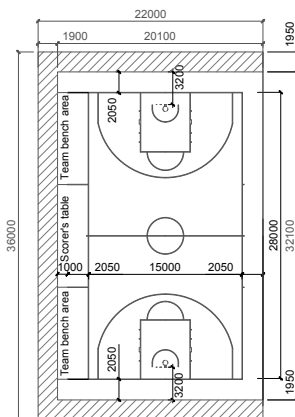
Secondary Sports

Layouts for other sports within a community level handball space of 36.00 x 22.00 x 7.00 m

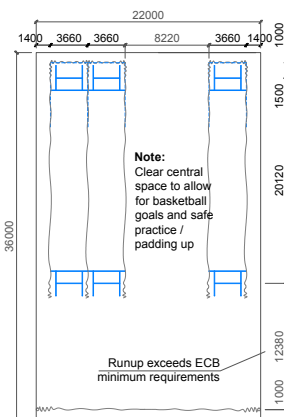
Badminton (Premier/Club)



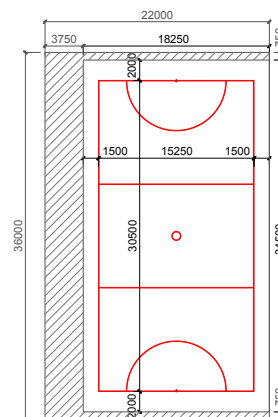
Basketball (Premier)



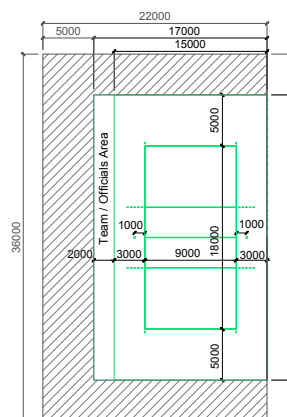
Indoor Cricket



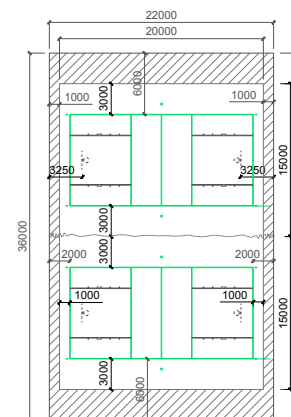
Netball (Club)



Volleyball (Premier)



Volleyball Training (transverse)



Basketball Training

- can be accommodated in a community level handball space
- number and location to project specific requirements