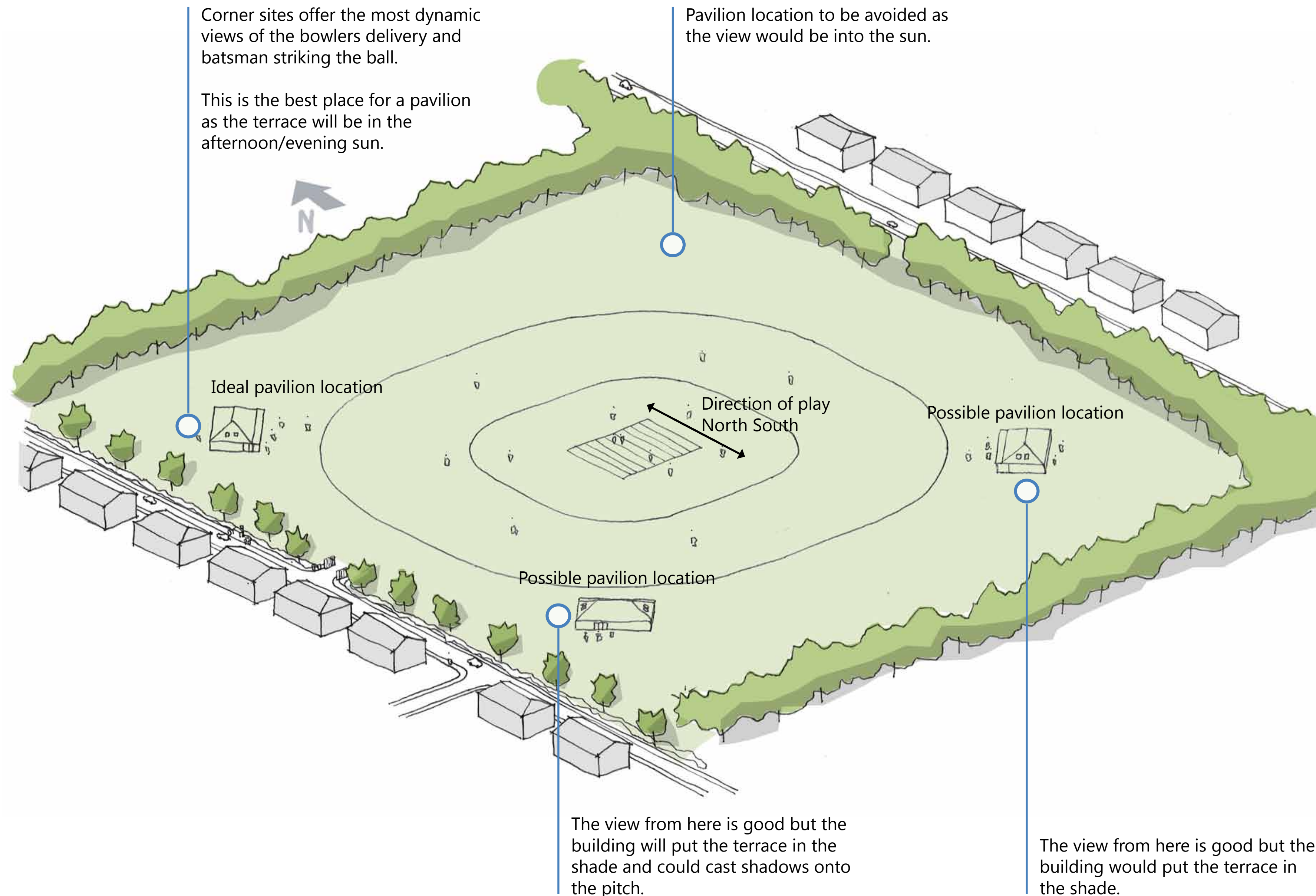


# DE 1 Design Examples

## CRICKET: Site Layout

Clubhouse Design Guidance Notes: **Display Panel**

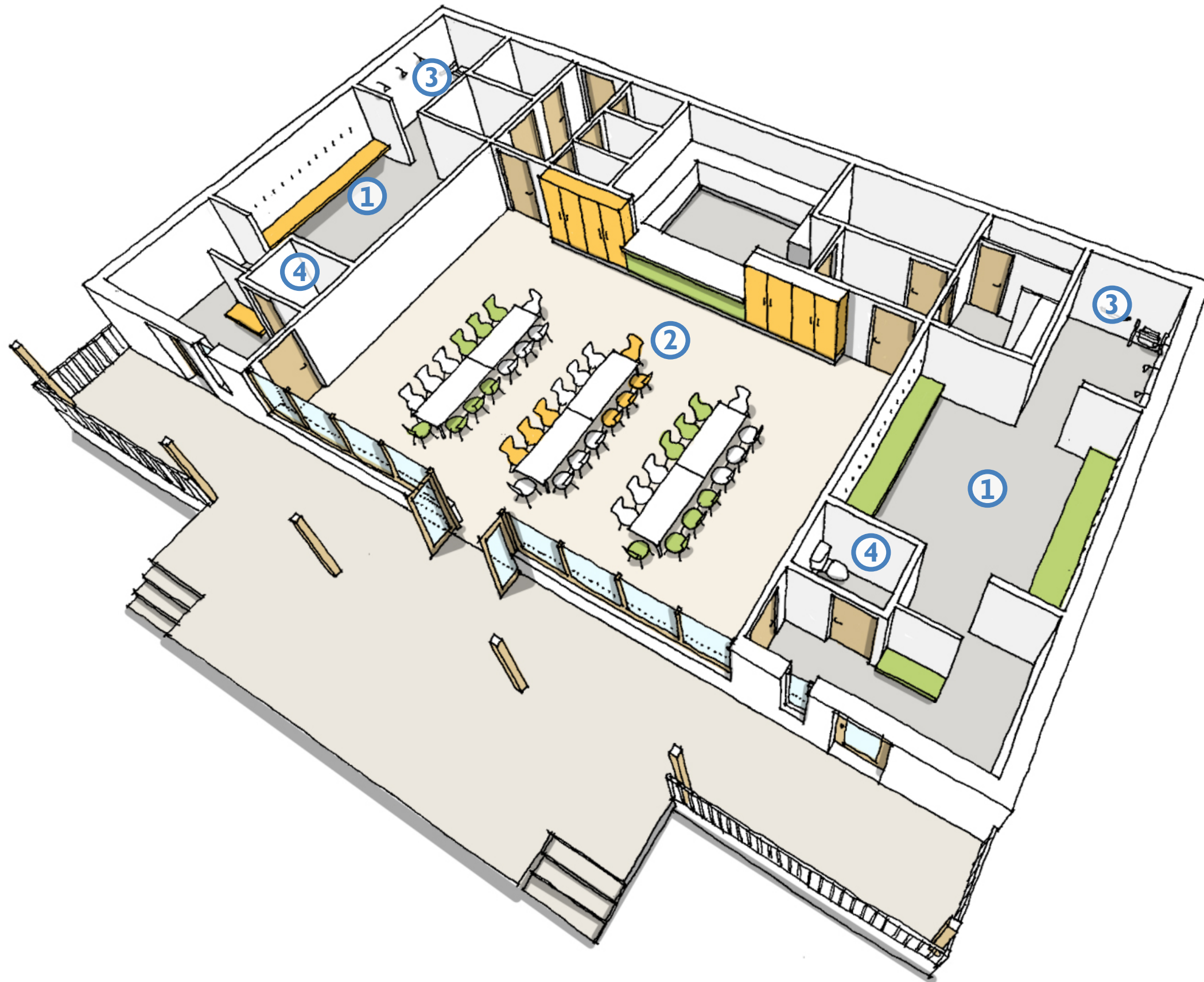




# DE 2 Design Examples

## CRICKET: Clubhouse

### Clubhouse Design Guidance Notes: **Display Panel**



### Changing Rooms

- 12 bench spaces per changing room.
- Space for kit beneath each bench.
- Three showers per changing room.
- WC directly accessible from each changing room.
- Separate umpires changing/first aid/physio room.
- Padding up area requires a view to the field of play. The padding up area also acts as a privacy screen to the changing area behind.
- Easy access to the changing rooms from the field of play.
- Door to changing room in secure location to prevent theft of valuables from batting teams changing rooms. Alternatively valuables can be collected and locked away in a secure locker.
- All players should be accommodated within the communal changing rooms. A deeper bench and a drop down seat in the shower can assist injured or disabled players.
- The social space should operate independently from changing rooms for maximum flexibility.
- Separate doors from the pitch to the changing room separates 'muddy' areas from 'clean' areas.

### Club Room

- Provide a separate WC which can be accessed from the social space and used by the public.
- Large club room for lunch and tea breaks. It can also be used as a social space in the evenings.
- Kitchen/bar with direct access to club room.
- Clear views of the pitch from the social space with full height glazing if possible.

### Positioning

- The clubhouse should be located to the corner of the pitch for best viewing.
- The optimum location is to the North West of the pitch looking South East to make best use of daylight afternoon sunshine and views of the game.
- The clubhouse could be raised above field of play to improve views of the match.
- The scoreboard could be a mobile board or a scorers hut.

### Recommended Room Finishes

#### ① Changing Room

Floor - Spike resistant vinyl or rubber floor  
Walls - Painted blockwork  
Ceiling - Painted glass fibre reinforced plasterboard

#### ② Club Room

Floor - Carpet or spike resistant vinyl  
Walls - Painted block or glass fibre reinforced plasterboard  
Ceiling - Painted plasterboard

#### ③ Shower Area

Floor - Slip-resistant floor tiles or vinyl laid to falls  
Walls - Tiled walls  
Ceiling - Painted moisture resistant plasterboard

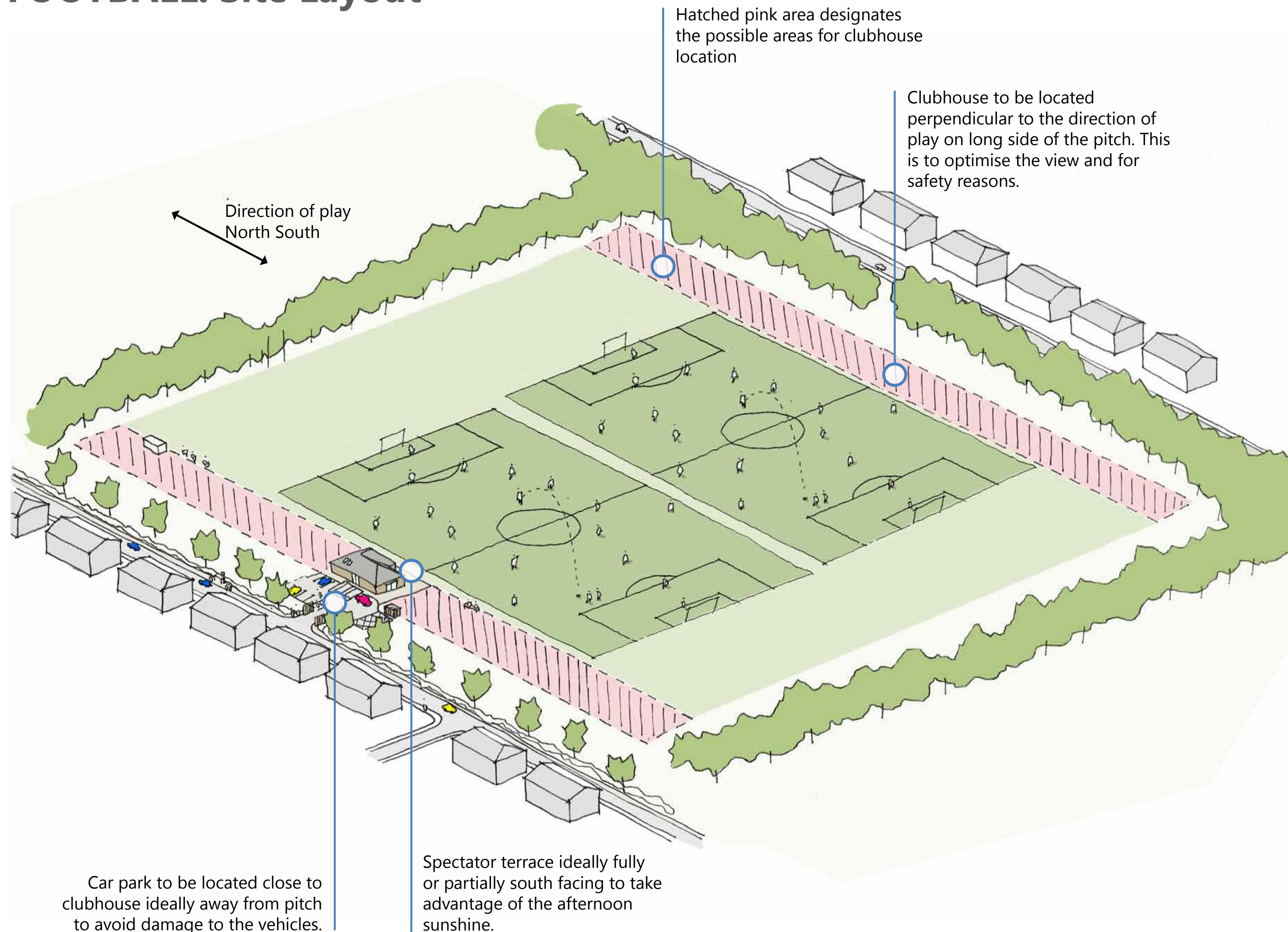
#### ④ Toilets

Floor - Slip-resistant and spike-resistant vinyl or rubber floor  
Walls - Painted blockwork  
Ceiling - Painted plasterboard



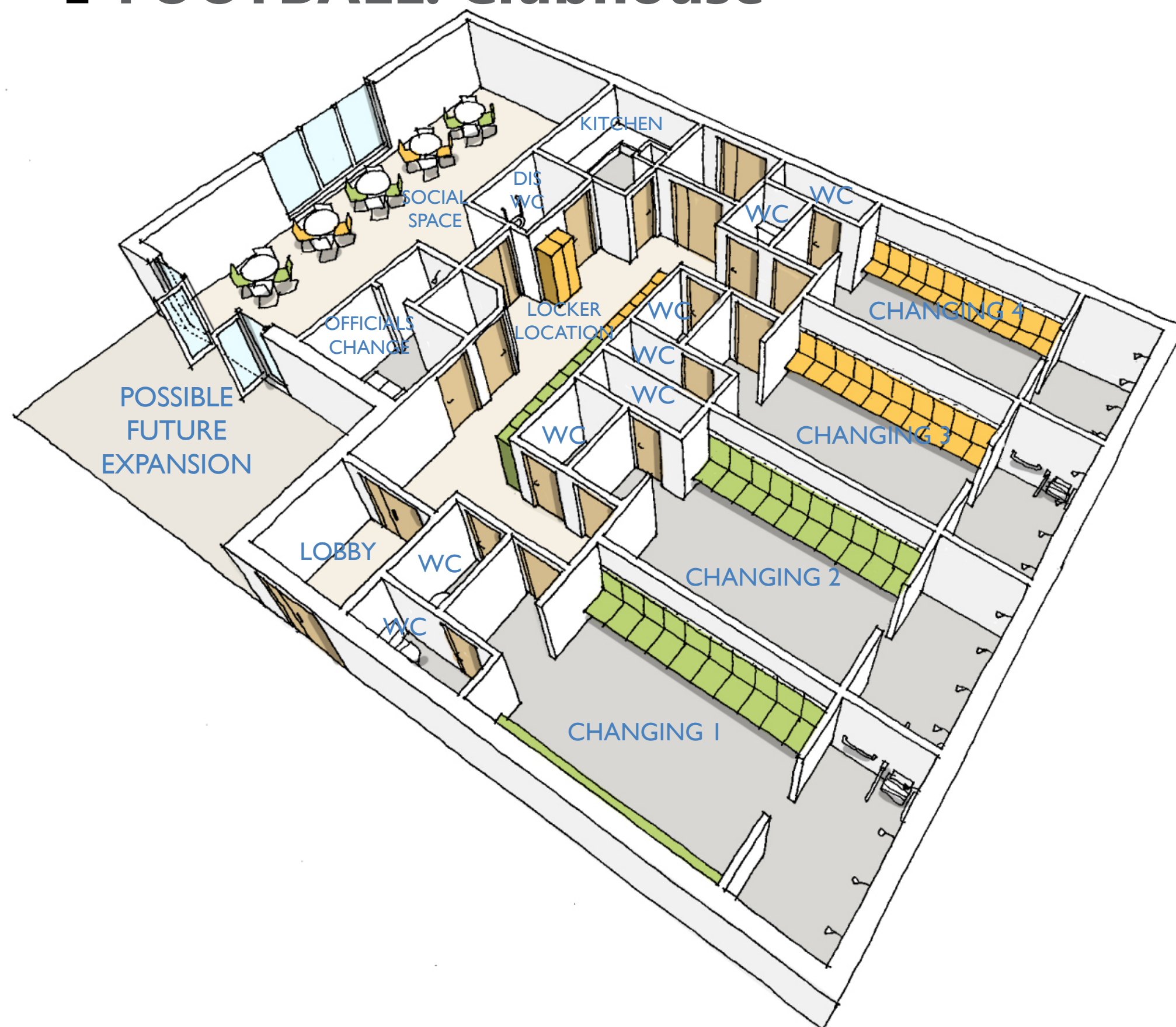
# DE 3 Design Examples FOOTBALL: Site Layout

## Clubhouse Design Guidance Notes: **Display Panel**





# DE 4 Design Examples FOOTBALL: Clubhouse



## Clubhouse Design Guidance Notes: **Display Panel**

### Changing Rooms

- Separate officials changing room
- Disabled Toilet
- Bench seating, allow nominal 500 mm per person.
- Site screens to all changing rooms to prevent views inside.
- Separate entrance to changing rooms from pitches helps prevent clean areas becoming dirty.
- WC accessed directly from each changing room. Essential for child protection.
- Corridors to be sufficiently wide to accommodate lockers. This allows changing rooms to be more flexible.
- Access from changing areas convenient for access to pitches.
- Changing for 20 people in each changing room.
- 4 showers per changing room required.
- Shower outlets to be minimum 750 mm apart.
- Drop down seat to be provided to each shower area to cater for users with disability or sports injury.
- Floors to be laid to falls for cleaning.
- Showers to be located at the far end of the changing rooms to help ensure wet and muddy areas remain separate.
- Views of pitches not required from the changing rooms.
- A lockable cleaners store must be provided.
- Shower drainage to be oversized and fully rodable.

### Club Room

- Provide a separate WC which can be accessed from social space and used by the public.
- Large clubroom for spectators and players. Can also be used as a social space in the evenings.
- Kitchen/bar with direct access to club room.
- Clear views of the pitch from the social space with full height glazing if possible.

### Positioning

- The clubhouse should be located away from the goals/goal posts for safety reasons.
- The optimum location is to the North West of the pitch looking South East to make best use of daylight afternoon sunshine and views of the game.
- The clubhouse could be raised above field of play to improve views of the match.

## Recommended Room Finishes

### ① Changing Room

Floor - Painted Concrete  
Walls - Painted blockwork  
Ceiling - Painted plasterboard.

### ② Club Room

Floor - Carpet or vinyl.  
Walls - Painted block or painted hardwall plaster.  
Ceiling - Painted plasterboard.

### ③ Shower Area

Floor - Slip-resistant floor tiles or vinyl laid to falls  
Walls - Tiled walls  
Ceiling - Painted moisture resistant plasterboard.

### ④ Toilets

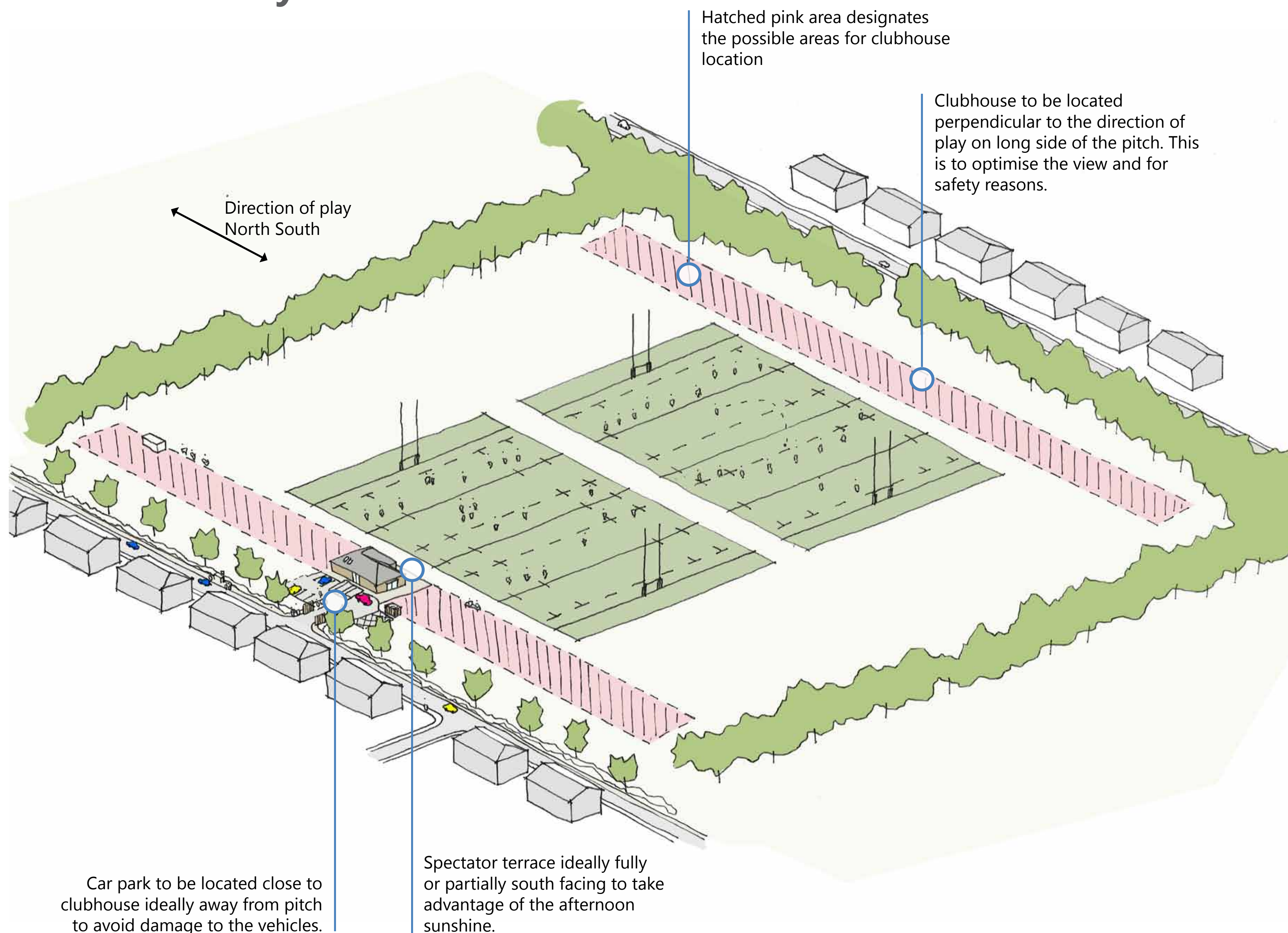
Floor - Painted Concrete  
Walls - Painted blockwork.  
Ceiling - Painted plasterboard.



# DE 5 Design Examples

## RUGBY: Site Layout

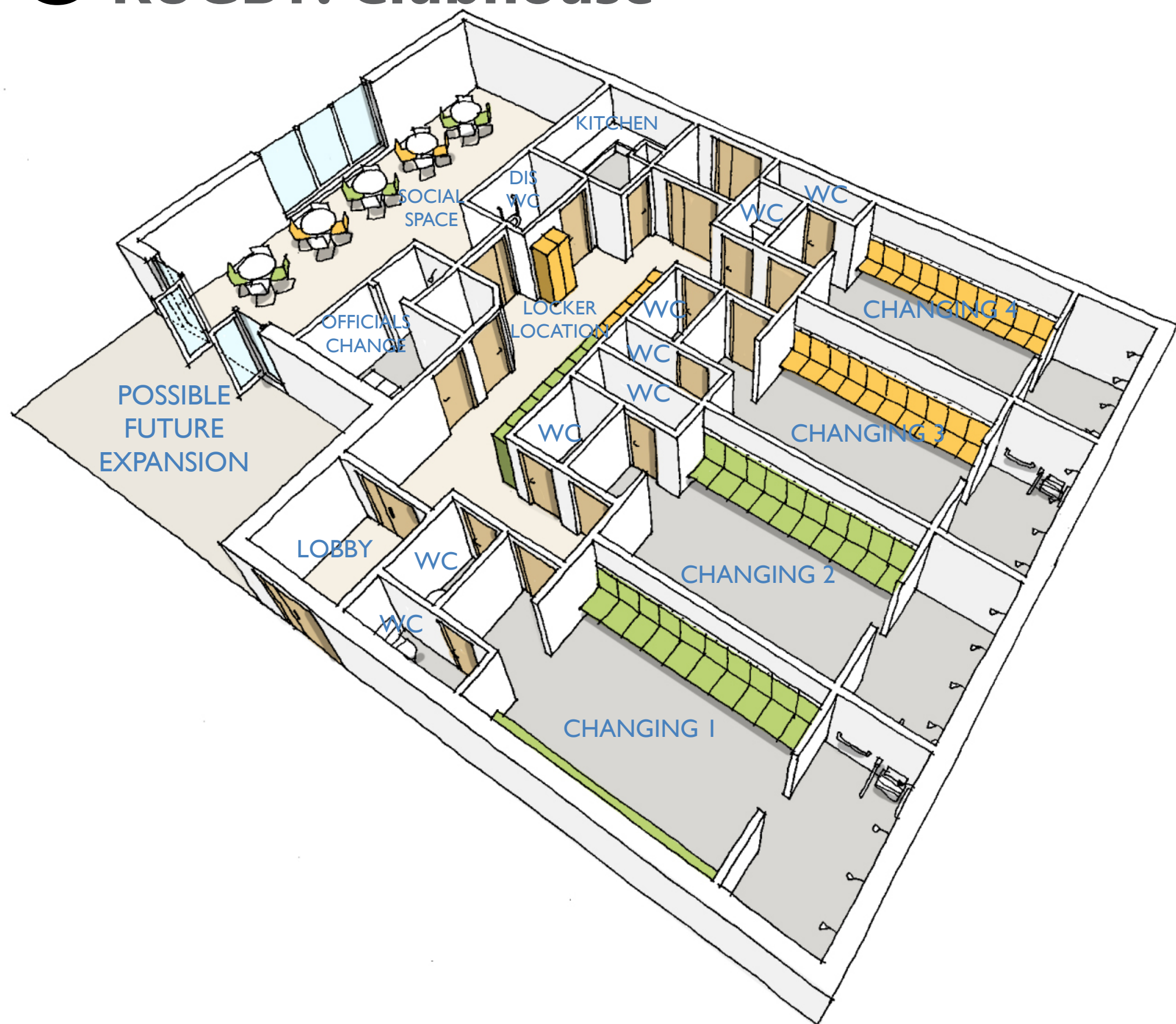
### Clubhouse Design Guidance Notes: **Display Panel**





# DE 6 Design Examples

## RUGBY: Clubhouse



## Clubhouse Design Guidance Notes: Display Panel

### Changing Rooms

- Separate officials changing room
- Disabled Toilet
- Bench seating, allow nominal 650 mm per person.
- Site screens to all changing rooms to prevent views inside.
- Separate entrance to changing rooms from pitches helps prevent clean areas becoming dirty.
- WC accessed directly from each changing room. Essential for child protection.
- Corridors to be sufficiently wide to accommodate lockers. This allows changing rooms to be more flexible.
- Access from changing areas convenient for access to pitches.
- Changing for 20 people in each changing room.
- 4 showers per changing room required.
- Shower outlets to be minimum 750 mm apart.
- Drop down seat to be provided to each shower area to cater for users with disability or sports injury.
- Floors to be laid to falls for cleaning.
- Showers to be located at the far end of the changing rooms to help ensure wet and muddy areas remain separate.
- Views of pitches not required from the changing rooms.
- A lockable cleaners store must be provided.
- Shower drainage to be oversized and fully rodable.

### Club Room

- Provide a separate WC which can be accessed from social space and used by the public.
- Large clubroom for spectators and players. Can also be used as a social space in the evenings.
- Kitchen/bar with direct access to club room.
- Clear views of the pitch from the social space with full height glazing if possible.

### Positioning

- The clubhouse should be located away from the goals/goal posts for safety reasons.
- The optimum location is to the North West of the pitch looking South East to make best use of daylight afternoon sunshine and views of the game.
- The clubhouse could be raised above field of play to improve views of the match.

### Recommended Room Finishes

#### ① Changing Room

Floor - Painted Concrete  
Walls - Painted blockwork  
Ceiling - Painted plasterboard.

#### ② Club Room

Floor - Carpet or vinyl.  
Walls - Painted block or painted hardwall plaster.  
Ceiling - Painted plasterboard.

#### ③ Shower Area

Floor - Slip-resistant floor tiles or vinyl laid to falls  
Walls - Tiled walls  
Ceiling - Painted moisture resistant plasterboard.

#### ④ Toilets

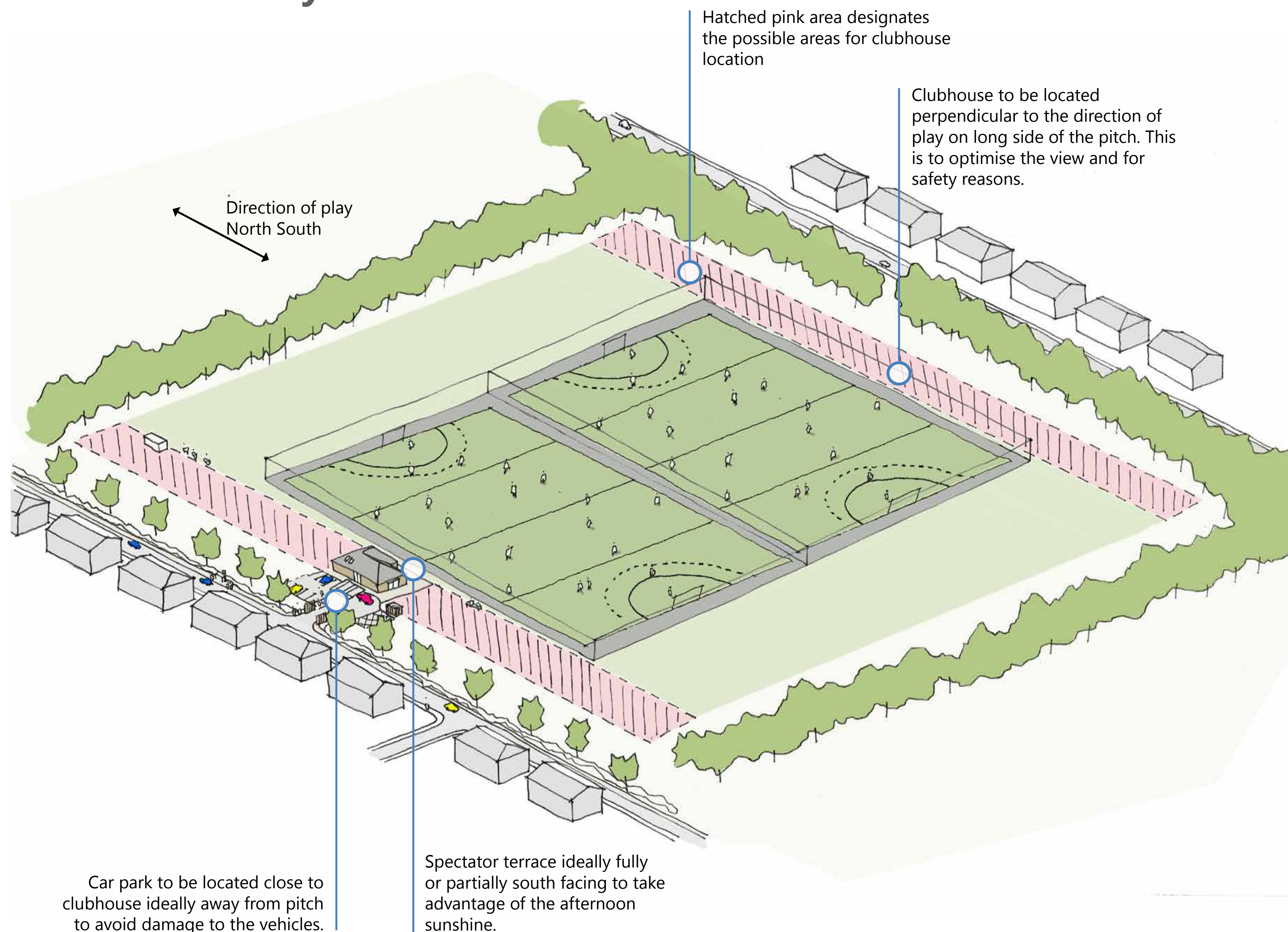
Floor - Painted Concrete  
Walls - Painted blockwork.  
Ceiling - Painted plasterboard.



# DE7 Design Examples

## HOCKEY: Site Layout

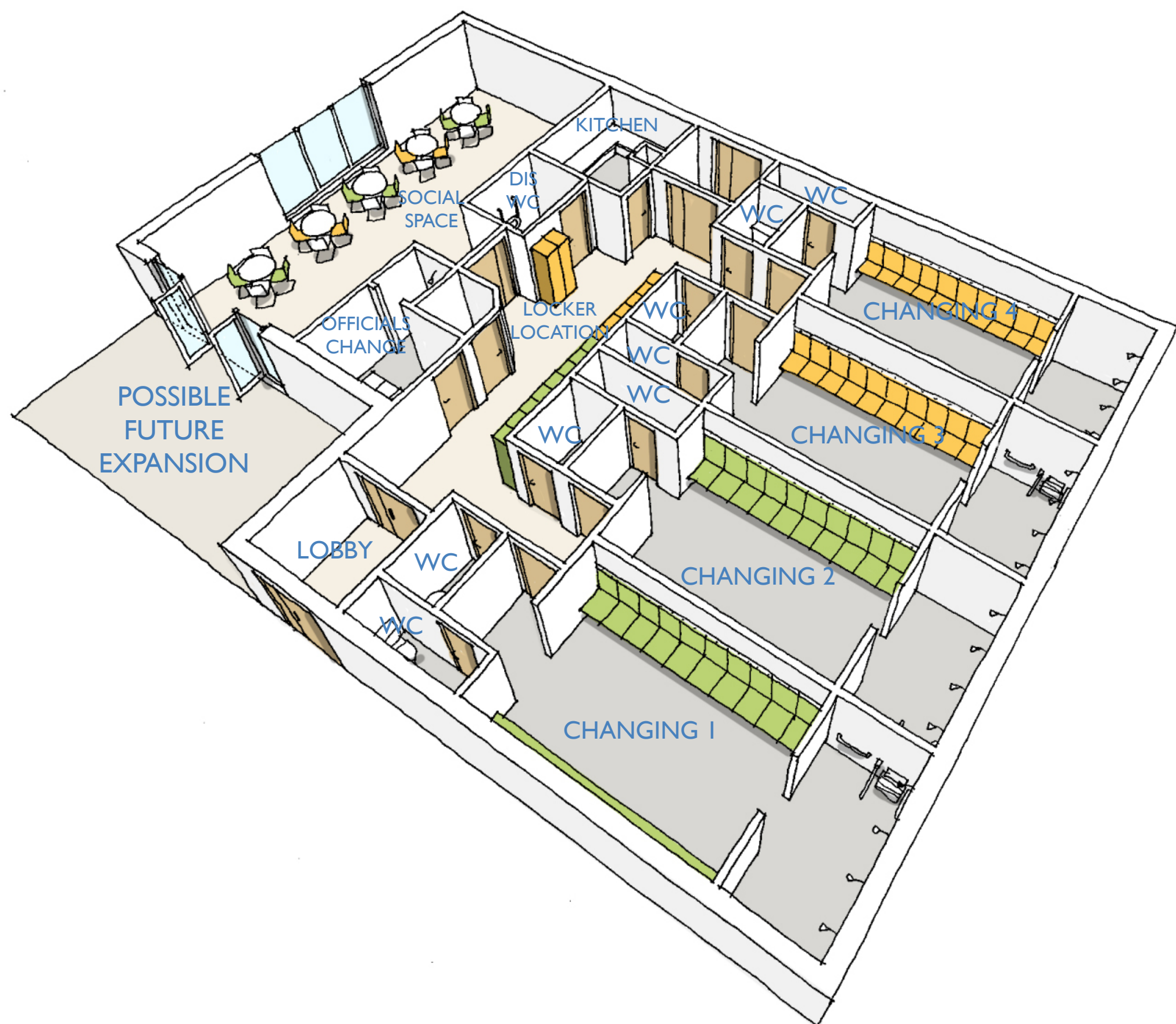
### Clubhouse Design Guidance Notes: **Display Panel**





# DE 8 Design Examples

## HOCKEY: Clubhouse



## Clubhouse Design Guidance Notes: **Display Panel**

### Changing Rooms

- Separate officials changing room
- Disabled Toilet
- Bench seating, allow nominal 500 mm per person.
- Site screens to all changing rooms to prevent views inside.
- Separate entrance to changing rooms from pitches helps prevent clean areas becoming dirty.
- WC accessed directly from each changing room. Essential for child protection.
- Corridors to be sufficiently wide to accommodate lockers. This allows changing rooms to be more flexible.
- Access from changing areas convenient for access to pitches.
- Changing for 20 people in each changing room.
- 4 showers per changing room required.
- Shower outlets to be minimum 750 mm apart.
- Drop down seat to be provided to each shower area to cater for users with disability or sports injury.
- Floors to be laid to falls for cleaning.
- Showers to be located at the far end of the changing rooms to help ensure wet and muddy areas remain separate.
- Views of pitches not required from the changing rooms.
- A lockable cleaners store must be provided.
- Shower drainage to be oversized and fully rodable.

### Club Room

- Provide a separate WC which can be accessed from social space and used by the public.
- Large clubroom for spectators and players. Can also be used as a social space in the evenings.
- Kitchen/bar with direct access to club room.
- Clear views of the pitch from the social space with full height glazing if possible.

### Positioning

- The clubhouse should be located away from the goals/goal posts for safety reasons.
- The optimum location is to the North West of the pitch looking South East to make best use of daylight afternoon sunshine and views of the game.
- The clubhouse could be raised above field of play to improve views of the match.

## Recommended Room Finishes

### ① Changing Room

Floor - Painted Concrete  
Walls - Painted blockwork  
Ceiling - Painted plasterboard.

### ② Club Room

Floor - Carpet or vinyl.  
Walls - Painted block or painted hardwall plaster.  
Ceiling - Painted plasterboard.

### ③ Shower Area

Floor - Slip-resistant floor tiles or vinyl laid to falls  
Walls - Tiled walls  
Ceiling - Painted moisture resistant plasterboard.

### ④ Toilets

Floor - Painted Concrete  
Walls - Painted blockwork.  
Ceiling - Painted plasterboard.