

Accessible Sports Facilities

'Sports Chair Zone' unisex
accessible WC (left hand transfer)
with power operated door set **Fig.25**

Scale: 1:20 @ A3

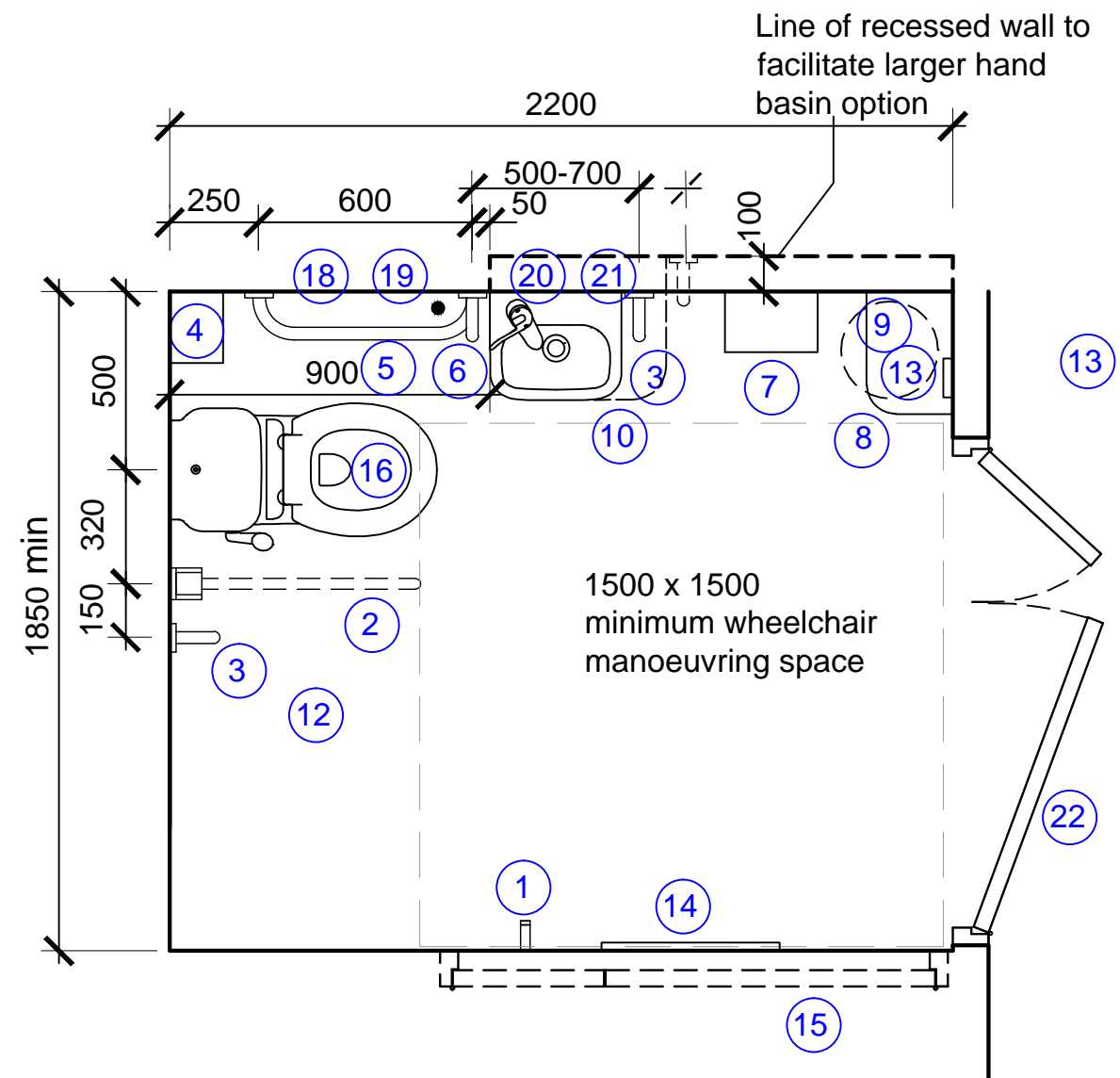
Notes:

This drawing is an extract from Sport England's Design Guidance
Note 'Accessible Sports Facilities' and must be read in
conjunction with the respective section of the guidance note

DO NOT SCALE FROM THIS DRAWING
ALL DIMENSIONS ARE IN MILLIMETRES

[Click here for 'Design and Cost Guidance'](#)

[Click here for 'User Guide'](#)



Key:

- Two clothes hooks set at 1400mm and 1050mm above floor level
- Drop-down rail (without toilet roll holder)
- Fixed vertical rail
- Colostomy changing shelf for ambulant users 950mm above floor level
- Fixed horizontal grabrail
- Fixed vertical rail and adjacent alarm pull-chord with two red triangles
- Automatic hand dryer
- Low shelf with rounded corner and sanitary dispenser with controls located 1000mm above floor level
- Disposal bin for miscellaneous items with sanitary dispenser above (750-1000mm above floor level)
- Hand basin can be recessed in order for a larger basin to be used (as an alternative to a standard small basin). The thermostatic mixer tap to be located on the WC side of the basin.
- Horizontal door pull to enable door to be closed when entering
- It is essential to keep the area adjacent to the WC clear to allow transfer onto the WC
- Wall mounted access control touch pad set at 1000mm above floor level located clear of door swings
- Mirror 1500mm high, located 600mm above floor
- Alternative door position
- WC: flush lever to wheelchair transfer side; transferring from a wheelchair to a WC imposes significant forces, therefore all fittings must be robust. Wing nut fixings should not be used to secure the toilet seat.
- 1026mm door to achieve minimum clearance requirement of 875mm
- Toilet paper dispenser
- Alarm reset button
- Paper towel dispenser
- Soap dispenser
- Power operated double door set to achieve minimum clearance requirements of 1200mm for wider sports chairs in a 'sports chair' zone

If two unisex toilets of this type are to be provided they should be mirrored to allow for left hand and right hand transfer.

Refer to Sport England's Design Guidance Note 'Accessible Sports Facilities' Figures 18 & 26 for key setting-out dimensions for WC and basin.